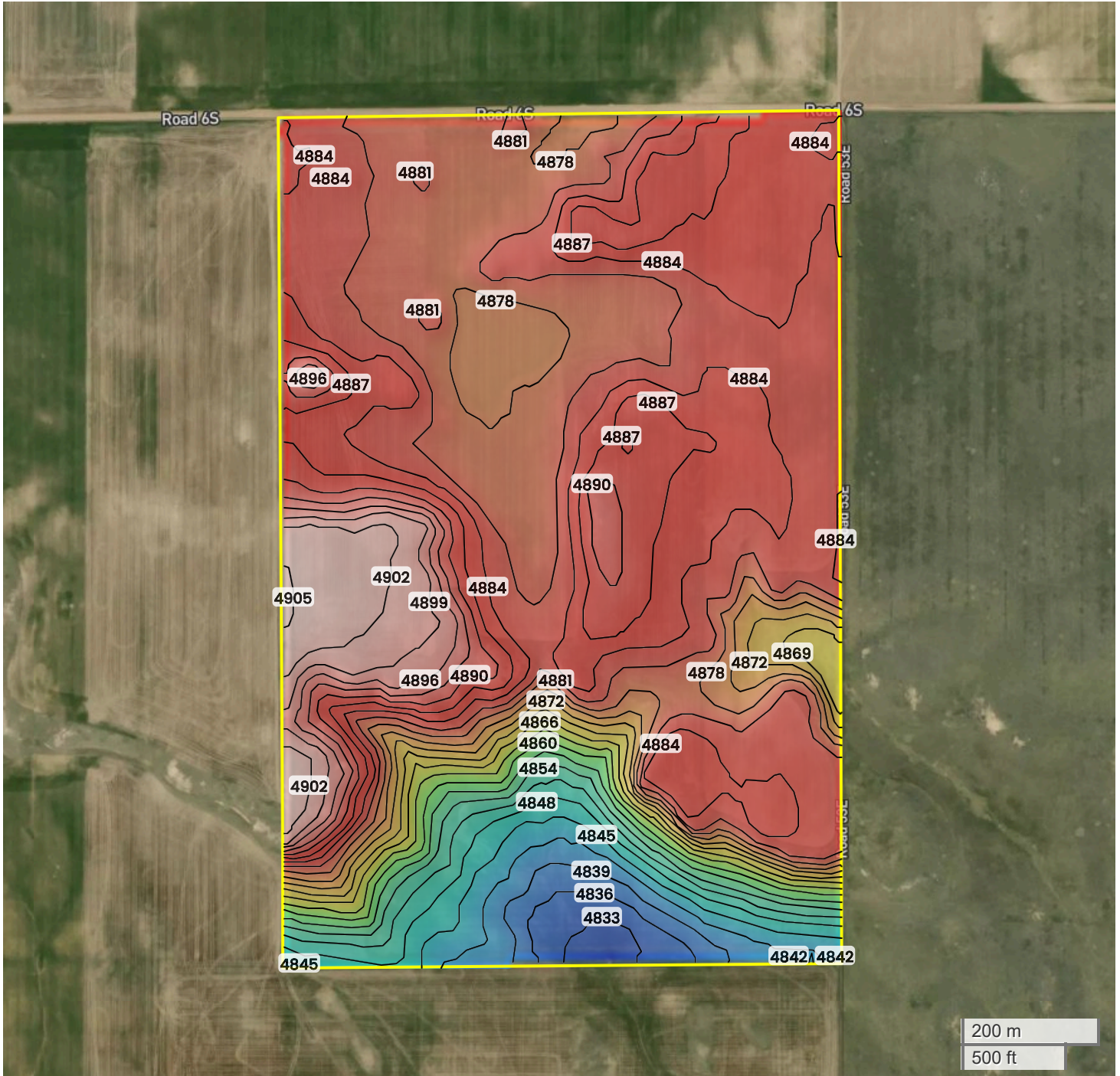




KIMBALL COUNTY (241.45 AC TOTAL, 184.08 AC TILLABLE)

# TOPOGRAPHY



4833 ft

4905 ft



Center: 41.027306, -103.559137

11-12N-55W

Antelope precinct Township

Kimball County, NE

Source: USGS 10m DEM

Interval(ft): 3

Max: 4905.0 ft

Min: 4833.0 ft

Range: 72.0 ft

Average: 4869.0 ft



FarmWorth, LLC makes no warranties, express or implied, regarding the accuracy of any information provided through FarmWorth.com. User is solely responsible for independently verifying all information prior to use and waives any claims against FarmWorth, LLC arising from inaccuracies in such information.